



Northern Newsflash

June 2004

Volume 1 Issue 3

Inside this issue:

New sculpture

Wheelbarrow Harry

Mural project

Letter from South Africa

Shore Faces

What's happening in the North Rotary works to support health

- 2 Since the first signing of a Memorandum of Understanding with Rotary International
- 2 District 9910 in 2001 significant support has been received from the Rotary community.
- 3 This memorandum combined forces together to help support fundraising activities for the hospital & community health services in the North Shore & Rodney areas.
- 3 To date the participating clubs have been, Devonport, East Coast Bays, Albany, Takapuna, Milford and Birkenhead.
- 4 Seventy thousand dollars has been contributed to special projects at the North Shore campus, with in kind donations and items of equipment donated to the Coronary Care Unit, The Special Care Baby Unit and the Emergency Department.



The Foundation has joined several clubs in combined efforts to send international medical aid to the Pacific region and more recently to a sister club in South Africa. Functional redundant medical equipment with an estimated book value of approximately \$1.5 million has been provided to the clubs who identify needy recipients and ship the equipment to them with the assistance of the defence force and foreign governments and Rotary Clubs. 2004 sees a Rotary Centennial Project under way at the main entrance to the hospital to provide a garden rest and waiting area adjacent to the main carpark for all who use the services at the hospital. The centennial garden will provide permanent and highly visible evidence of Rotary's support for health and the hospital



Joint fundraising events have also been a highlight, e.g. The Annual Hospital Charity Golf Day.

The North Shore Hospital Foundation now presents a news column

THE FOUNDATION FOCUS in the North Shore Times every second Friday of the month.

Features of activities and news of innovations at Waitemata also feature in a fortnightly publication

EXPERIENCE in the North Shore Times

Every quarter the **HEALTH REPORT** is a published health themed insert carrying news from Health Foundations in the North, South and West

CHECK IT OUT
KEEP UP WITH THE NEWS FROM YOUR REGION

Maternity Essentials works with Midwives

A new project has been introduced for ante natal mothers at North Shore Hospital. A special pamper package has been produced for mothers-to-be which focuses on their personal image and happiness. The ME pack contains sample product for skin care, luxury soaps, hand-crème, stretch mark crème, shampoos, herbal teas, digest easy natural products as well as special vouchers for designer portraits, gym memberships and other healthy and organic service providers. The packs are delivered to the homes of the moth-

ers-to-be after they register with their midwives. Heidi Collins, managing director of Maternity Essentials has also provided a special draw for midwives to participate in. The three individual prizes are annual sponsorship to midwives conference. Each pack that goes to a mother-to-be also brings a percentage to the foundation which is tagged for projects in Maternity services.

Harry the Wheelbarrow Man helps North Shore Hospital Melanoma Team



Mr Harry Townsend, a retired gentleman from the UK, has over the past four years since the death of his wife Myfannwy from melanoma raised funds to increase the awareness of this devastating disease and provide assistance in the treatment for it. Harry walked the length of the North Island supported by fellow Rotarians, spreading the word and collection donations as he went. The North Shore Hospital Foundation made contact with Harry when he was in Auckland. He visited the hospital and spoke with the team here who run the Melanoma Clinic. He learnt from the surgeons, oncologists, pharmacists & research nurses about exactly what is happening here and what the dreams are of the team in the fight against melanoma.

He walked towards forming a Melanoma Foundation and eventually a Melanoma Centre on the North Shore in partnership with the Waitemata DHB team.



Dr David Simpson & Research Nurse Lorraine Neave accept the donation from Harry Townsend.

Once the walk was completed Harry touched base again and this time proudly donated the funds he had raised during his



Entranceway Sculpture Installed at North Shore Hospital

Titled “ Gateway to Wellness” Sculptor Alfred Shishmanian has based the ceramic sculpture on the philosophy “to cut a blade of grass makes the universe quiver” describing our link to nature.

The setting is made up of 14 sets of groups of four symbolic pieces of grass denoting the four corners of the earth. Alfred is an arts facilitator for a specialist group FEAT which provides training & education for people with diverse needs.

The FEAT group was introduced to the hospital by Arts Access Aotearoa and their terracotta pieces can be seen in several areas on the North Shore site.



Mural Artist to bring exciting art experience to the main entrance at North Shore Hospital

Michelle Stuart is an award winning Auckland freelance artist with experience in textile print design, fashion design, corporate package design and book illustration as well as fine art. An accomplished sculptress and textural artist, her work is comprised of some very innovative use of traditional materials to portray New Zealand themes. Michelle is particularly recognised for her two dimensional multimedia land and sea scapes.

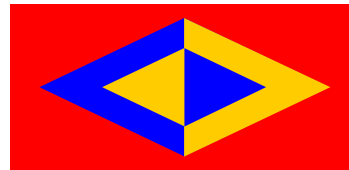
Michelle has created a seven panel mural for the front entrance to North Shore Hospital named 'Te Wai Awhina' (the healing waters).

Consultation with a hospital user group resulted in the issuing of a descriptive criteria of the Te Wai Awhina title and indicated the preference was for the artwork to reflect Lake Pupuke, Rangitoto and the Waitemata Harbour, which make up the healing waters.

In the mural, the healing waters are shown held in the ever safe gaze of the Maori God Ranginui who resides in the sunrise beside the island Rangitoto. He looks protectively over the Earth (his wife Papatuanuku), the hospital, its grounds and all the people within. The entire scene is cradled in the safety of the shape of a great canoe, its prow depicting new life, progress and its stern showing where the hospital has carved itself a place, growing with hard work, devotion and integrity. The stern is also adorned with the symbols of arrival and departure signifying the beginning and end of life.

A black and white life-size version of the mural will be in place in June and the first completed panel will be unveiled in August.

A public appeal for donations will accompany its unveiling and it is hoped the mural will bring much pleasure to patients, visitors and staff of North Shore Hospital.



Letter of thanks from South Africa

My dear friends,
I sit here at my computer very sweaty and dirty but totally humbled and overwhelmed at what I have just

experienced and done. YES !!

The eagle certainly HAS landed and what a magnificent New Year's present it has brought.

We off loaded the container of medical equipment this morning at 1100 hrs.

It took me and nine labourers two hours to achieve this - what with problems getting the big truck under some pipes here at the hospital, battling to saw through the security tag and so forth, but who's complaining??

We had some delays with the delivery of the container, firstly because of the festive season, and then because there seemed to be a problem with tampering of the security tag. Never the less this was all sorted out, and the container, which was due to arrive today at 1300 - arrived at 11h00 and caught us all hopping.

What we have received from North Shore Hospital Foundation and the East Coast Bays Rotary Club in New Zealand has brought me close to tears.

The generosity of people never fails to amaze me. The quantity and diversity of equipment is excellent, and I know that there will be many people who will benefit from all this wonderful medical stuff.

President, Edenvale Rotary Club, South Africa.

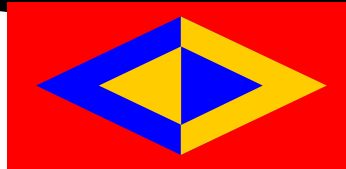


North Shore Hospital Foundation

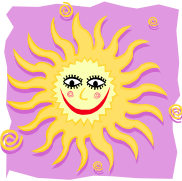
Private Bag 93 503

Phone: 486 8920 ext 2670

We are on the web
www.northshorehospitalfoundation.com



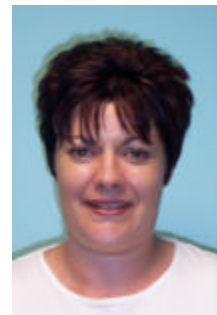
Working with North Harbour Communities



Faces on the North Shore

Karen Begg: Security Officer

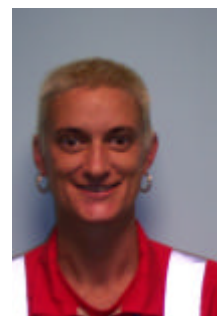
Originally from Taumarunui, Karen came to Auckland nine years ago. Her interest in health led her to work in the rest home setting as a caregiver for several years. With a growing interest in Security issues Karen joined Chubb Security as a mobile patrol officer and spent her spare time as a volunteer officer for the NZ Police. The area she was responsible for patrolling was the Hibiscus Coast and the North Shore. Last year Karen joined the Security team at North Shore Hospital and has put together the skills she has gained both in the health and security sectors.



Tanya McAlister: Fire & Safety Officer

Tanya joined WDHB a year ago to shake up our fire safety awareness and emergency management. Tanya's experience in fire safety spans 14 years in this speciality, working in the corporate sector and has been responsible for implementing major emergency fire & evacuation processes in New Zealand's tallest office building (Coopers & Lybrand /AK) and major shopping complexes including Botany Downs. A resident of the North Shore, Tanya enjoys a young family with her husband Rob. However, she is on call 24/7 for all emergency & disaster issues across the WDHB district. Responsible for all fire & emergency training, you will see Tanya hiking the corridors in her firebrand reflective uniform.

Thanks Tanya for watching out for us.



Nell Anderson: Foundation 'Healing Gardens' Volunteer

Healing gardens volunteer joined the foundation in May 2003. A keen gardener Nell is becoming a familiar face tending the gardens throughout the hospital. Interior plants also receive Nell's attention as she works her way through the huge maintenance programme for the foundation. The care really shows as the gardens continue to flourish under her green thumb.

