



NORTH SHORE HOSPITAL FOUNDATION

Northern Newsflash

July 2006

Mad Butcher Suburban News Community Trust/make third donation to foundation

Inside this issue:

Quilters donate

Tennessee visitors

Community Groups rally

Second panel for mural

Online auction for cardiac unit

Golf day success

Faces on the Shore

- 2 The Mad Butcher Suburban/Fairfax News
- 2 Community Trust made its third donation to projects at North Shore Hospital. Previously this active donor has provided advanced endoscopic ultrasonic equipment for the gastroenterology department and a specialised defibrillator for the soon to be constructed cardiac catheter laboratory at the hospital.
- 2 The donated funds are raised as part of a strategic partnership with the Foundation and The North Shore Times in presenting the quarterly publication of the **HEALTH REPORT**.
- 3 This health promotion targeted publication goes to over 80,000 homes on the North Shore. A percentage of the advertising sales are designated to the benefit of the foundation. The Mad Butcher Community Trust adds to the total and annually make a presentation to the foundation.
- 3 2006 saw a fantastic donation of \$20,000 to purchase a specialised physiological monitor for the Cardiac & Catheter laboratory
- 4
- 4

*Dr Dwayne Crombie ,CEO/WDHB
Mr Wallace Britton/Chair NSHF
& Jane Hunter /Executive Dir NSHF
Receive the generous donation*



The North Shore Hospital Foundation now presents a news

column

THE FOUNDATION

FOCUS

in the North Shore Times every second Friday of the month.

Each quarter the

HEALTH REPORT is published . A health themed insert carrying news from Health Foundations and community providers in the North ,Central & South areas

CHECK IT OUT

KEEP UP WITH THE NEWS FROM YOUR

REGION

Textile Art creates soothing environment at Breast Screen Aotearoa

Local textile artist Margaret Scrymgeour created seven exquisite art pieces for the new Breast Screen facility opened in Takapuna. Using the brief of Te Wai Awhina , Margaret created art capturing the feelings of the coastline, summer days, sunrises and sunsets from the beach.

Several panels feature carefully collected and decorated shells, seaweed and stones from the shoreline.

Silk art works make up other subjects such as “Regatta Day” & “Under Canvas “ which remind of us of our links with sailing, “Where the waters meet the sand “(featured /right) creates the images of relaxation and pleasure A wonderful collection of healing art to be appreciated by all the users at Pupuke Road



Exquisite quilting handwork makes SCBU extra special



Marj Ussher, a staff member in the ECC Department North Shore is firmly addicted to her quilting passion. Marj approached all the members of the Auckland Patchwork Quilters Guild and asked them if they would be interested in providing the Special Care Baby Unit & Maternity Services at North Shore Hospital with custom made quilts.

The foundation gave a presentation to the combined Guild and the wonderful members with their amazing craft set about making unbelievably beautiful quilts for the tiny newborns.

Some of the quilts adorn bassinets in the unit and others specifically designed as memorial quilts are presented to the families who suffer tragedy during childbirth.

The Guild has made two presentations to the hospital through the foundation and every family who have received these thoughtful hand made pieces of love are touched by the gift.

Rotary Team from Tennessee visit the Hospital

Each year, under the Memorandum of understanding agreement the Foundation has with Rotary District 9910. North Shore Hospital hosts a visiting team under the GSE (Group Study Exchange) Programme. This project enables international exchange for six weeks to a group to learn how their vocations are practised in another country and to participate in a different life & culture. Janine Tong presented our business to the group made up of a Pharmacist, doctor of physiology, a retired microbiologist and a physical therapist from Tennessee. They were wowed with our hospital & services.



Community service groups contribute to Cardiac unit

The community service clubs on the North Shore are getting organised in their support of the big campaign to raise funds for a new cardiac diagnostic & treatment unit at North Shore.

Using a variety of fundraising initiatives the following clubs & groups have made significant donations to the project

Rotary Clubs of East Coast Bays, Glenfield, Milford, North Shore, Takapuna and Orewa.

Northcote Baptist Opportunity Shop, North Shore Women's Club, Mairangi Bay Women's Club, Takapuna Kiwanis, Glenfield Lions and many, many individual donations from supporters of the foundation CARDIAC campaign



Second panel installed in the Te Wai Awhina mural project



After nearly a year of a public fundraising campaign the second section of the seven paneled multimedia artwork Te Wai Awhina by artist Michelle Stuart has been installed. This panel features Papatuanuku (mother Earth) nestling in the land beside Lake Pupuke with the eye of her husband Ranginui (father Sky) keeping her safe in his gaze. Beside Papatuanuku is Nga Hau E Wha the people of the four winds/all those in the universe) depicted as the four koru fronds.

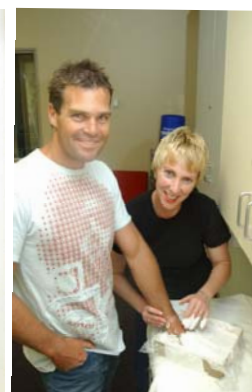
The two dimensional panel is finished in beautiful lifelike images of paua, the artist has used outstanding metallic paints to create the real effect of the shell surface.

Fundraising for this, the largest mural in a health facility in New Zealand will continue towards the goal of completion.

Mural replicas are available, tastefully boarded for framing, from the Foundation for \$35. Contact extension 2454.



Online Auction of Celebrity Hands for Hearts ready to launch early August



Tastefully framed collectors items created by Denise Flett of the Anne Young Breast Clinic will be featuring in a global online auction to raise funds for the new cardiac unit. This is the first time this concept has been created in NZ and a collection of significant NZers have joined the foundation in the project.. Featured hands include: Buck Shelford, Sir Wilson Whineray, Greg Murphy, Cory Hutchings, Martin Crowe, Allison Roe, Barbara & Bruce Kendall, Ian Ferguson, Bernice Mene, Tina Cross, Tim Finn to name a few

WATCH FOR THE PROMOTION, A CHANCE TO OWN A HERO'S HAND

North Shore Hospital Foundation

Private Bag 93 503 Takapuna

Telephone 486 8954

We are on the web

www.northshorehospitalfoundation.com

This year's charity golf day raises \$10,000 for the Foundation

April saw a brilliant day for 140 keen golfers participating in the annual golf day organised by the Rotary Club East Coast Bays . Novelty holes added to the fun for the less serious golfers and players had their chance to measure their shots against those of a professional player. Local businesses collaborated with Rotary providing sponsorship and Lexus North Shore presented a stunning display of luxury vehicles . Great prizes and a wonderful after match function completed a perfect afternoon of fun & fundraising .This years funds will complete the *Wai Marama* garden at the Shea Terrace entrance to North Shore Hospital



Faces on the North Shore

MARTIN OLLIFF; ORDERLY SERVICES

“Marty” as he is affectionately known by nearly all the staff at North Shore has worked for orderly services since January 1988 , 17years and not counting yet. Marty is renowned for his cheery conversation ,great smile and for going the extra mile to help absolutely everybody.

A dedicated Shore boy Martin started life with his Ambulance Station Officer father & family at the St John ,Shea Terrace site.. It was a natural progression for him to look to his hospital for employment when he was ready to join the workforce.

Marty's interests include Speedway, Rugby, Ten Pin Bowling, Weight Training and Latin Dancing.



JANINE CHESTERMAN; COMMUNICATIONS ADVISER

Based at North Shore Hospital, Janine has worked in Waitemata DHB's Communications Department since January 2004. Among her other tasks, Janine writes for the DHB staff newsletter *Healthlines*, and enjoys interviewing a diverse range of people from around the organisation each month. Prior to completing her communications degree, Janine worked as a qualified veterinary nurse - something she still does on alternate weekends. Her interests include cooking, going to the gym, reading, biking, walking her dog at the beach, watching some weekend sport, and eating! She is looking forward to a trip to the UK and Europe later this year.

